



TORRE  
DI CABRERA



SPIAGGIA  
PIETRENERE



BELVEDERE  
VILLA COMUNALE



Premia Home srl

AGENCY — CATANIA

POZZALLO — RG

## Where Sea and History Meet: Exclusive Investment in Southeast Sicily

€ 4.200.000

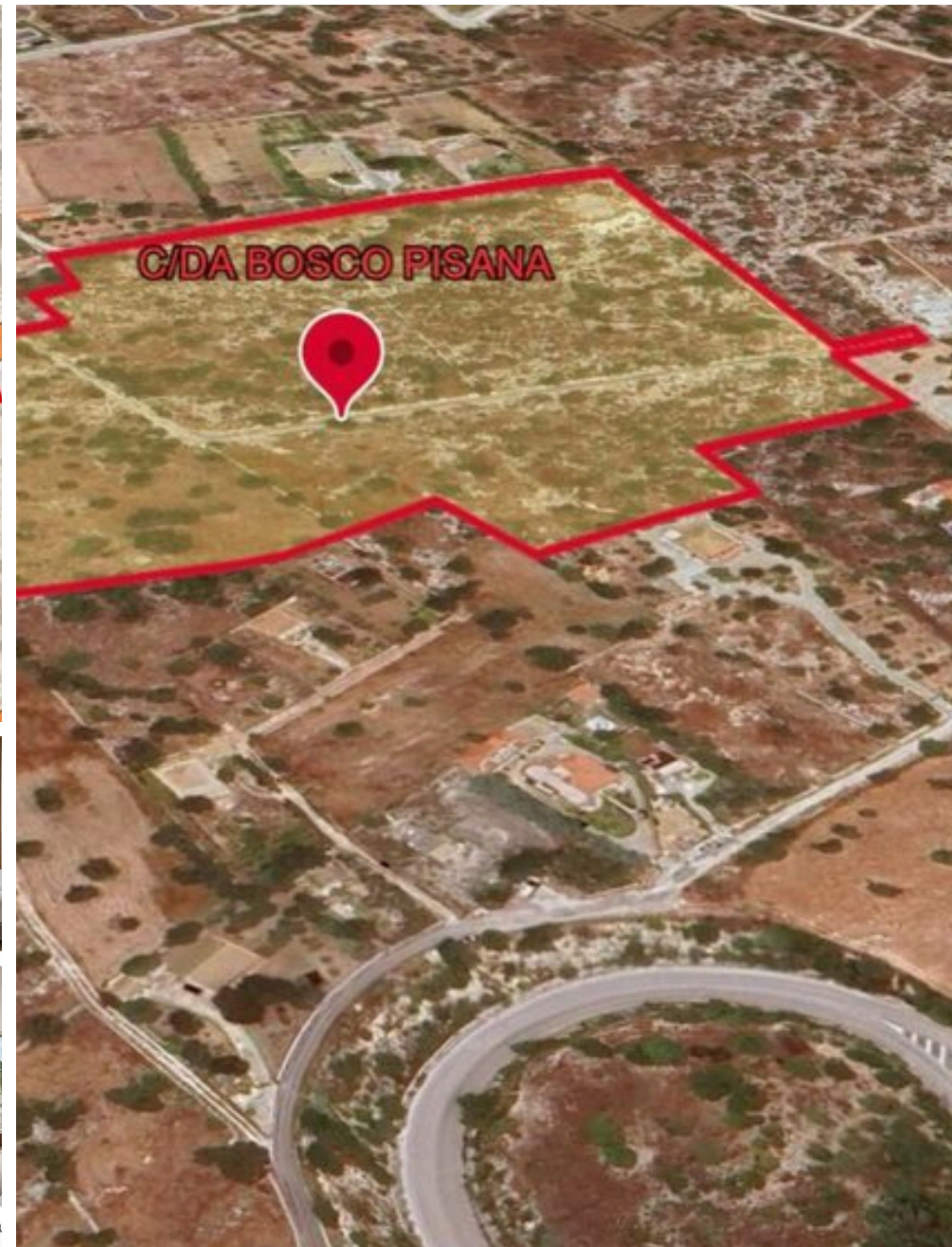
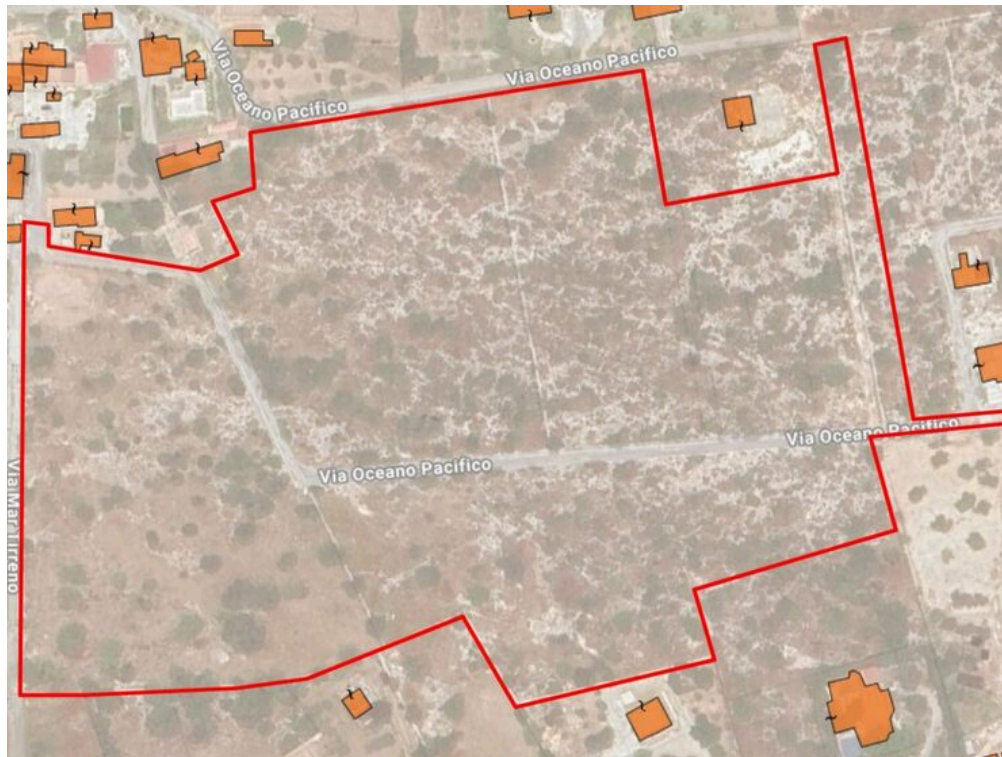
PRICE

53000 m<sup>2</sup>

SQUARE METRES

10

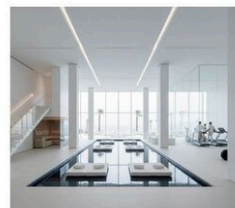
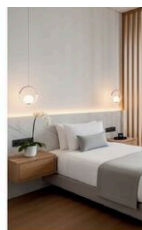
ROOMS



GETTI CHE GENERANO VALORE

che racconta la Sicilia

progettuale è un resort  
ienza e al benessere,  
e l'autenticità della Sicilia  
li qualità e un'estetica  
rpo centrale di 1.000 mq  
l luminosa con lounge e  
jante e un ristorante con  
sterna coperta e cucina  
sta. Il seminterrato di  
spita la zona benessere  
riscaldata, sauna, bagno  
massaggi, sala meeting e  
zati in modo funzionale.  
omplesso, una grande  
n solarium e un bar  
r offrire un'esperienza di  
, rilassante e in armonia  
i.



omposta da 14 suite da 33 mq, pensate per ospitare fino a qu  
22 mq per uso singolo o doppio, tutte caratterizzate da


## DESCRIPTION

# Where Sea and History Meet: Exclusive Investment in Southeast Sicily

Investing in Pozzallo means entering one of the most promising realities of the Mediterranean, where beauty, quality of life and land development meet. In the center of an area rich in attractions, including the capitals of Sicilian Baroque and the light sandy beaches, in one of the fastest growing tourist and residential areas of the province of Ragusa, we propose a plot of land of 52,500 square meters, characterized by a high urban flexibility, which allows two development strategies, which can be alternative or combined: the construction of a resort or high-level accommodation facility, or a residential subdivision for the realization of independent villas. Precisely in Pozzallo, Contrada Bosco Pisana, strategic

location, the available building volume and the growing attractiveness of the area make this project ideal for institutional investors, family offices and private developers. Location and spatial context City: Pozzallo (RG) Area: Contrada Bosco Pisana Region: Southeast Sicily - Val di Noto Strategic proximities Beaches and crystal clear sea just minutes away Port of Pozzallo, with tourist and cruise connections Airports of Comiso and Catania Historic centers of Noto, Modica and Scicli, UNESCO World Heritage Sites Territorial trend The area shows a strong development of experiential and seaside tourism, with a growing demand for boutique resorts, second homes and quality tourist rentals....

 **53000 m<sup>2</sup>**  
AREA

 **10**  
ROOMS

 **—**  
BATHROOMS

 **€ 4.200.000**  
PRICE

## FEATURES

   
OPPORTUNITY EXCLUSIVE  
POSITION



Premia Home srl

Premia Home srl

## CONTACTS

### Book a visit

Contact us for more information  
or to schedule a viewing.

 **PHONE**  
**+39 3289086227**

 **EMAIL**  
**segreteria@premiahome.it**

 **ADDRESS**  
**Viale Jonio,35, Catania, Catania**